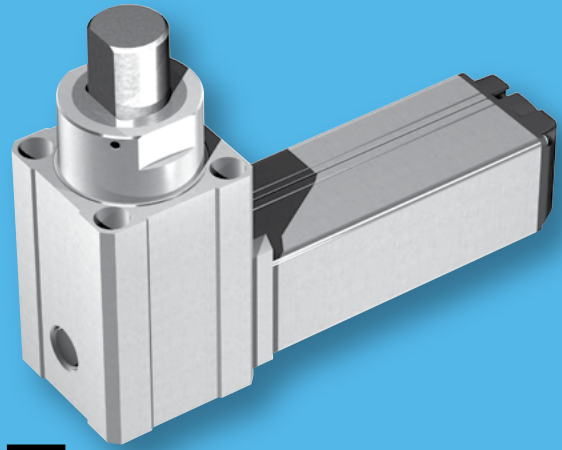


ROBO Cylinder That Is Designed and Dedicated for Stopping a Moving Product on a Roller Conveyor.

Stopper Cylinder

RCP4-ST4525E



Product Features

- Suitable for stopping moving product on a roller conveyor without the use of air.
- A new model is added with the capability of stopping a moving product with a maximum weight of 25kg.
- Improved impact resistance with floating structure.

RCP4-ST Stopper Cylinder Models

Max. Work Piece Weight	Model
150kg	RCP4-ST615E
80kg	RCP4-ST68E
NEW 25kg	RCP4-ST4525E

Model	
Model	
RCP4-ST4525E	—

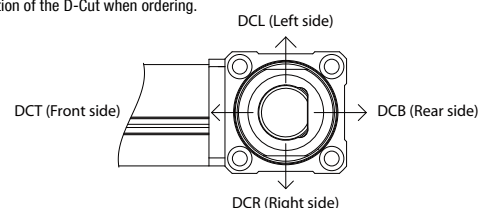
Cable Length		
Type	Cable Code	
Standard Type	P (1m)	—
	S (3m)	—
	M (5m)	—
Special Length	X06 (6m) ~ X10 (10m)	—
	X11 (11m) ~ X15 (15m)	—
	X16 (16m) ~ X20 (20m)	—
	R01 (1m) ~ R03 (3m)	—
Robot Cable	R04 (4m) ~ R05 (5m)	—
	R06 (6m) ~ R10 (10m)	—
	R11 (11m) ~ R15 (15m)	—
	R16 (16m) ~ R20 (20m)	—

Performance/Specifications	
Stroke	20mm
Max. Speed	75mm/s
Max. Acceleration	0.2G
Weight	0.7kg
Positioning Repeatability	±0.5mm
Max. Work Piece Weight	25kg
Max. Work Piece Impact Speed	333mm/s (20m/min)
Installation Orientation	Vertical (rod oriented upside only) Horizontal / horizontally oriented wall mount or ceiling mount not available
Life (Reference)*1	5 million times
Ambient Operating Temperature	0°C ~ 40°C
Ambient Operating Humidity	Max. 85% (non-condensing)

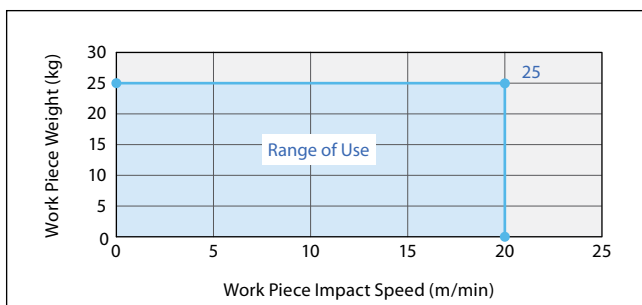
*1 The product life may vary depending on the condition and environment of use or maintenance conditions (oil supply, cleaning).

Options	
Name	Option Code
Non-motor End Specification	NM
D-cut Axis Tip Type (Front Side)*2	DCT
D-cut Axis Tip Type (Left Side)*2	DCL
D-cut Axis Tip Type (Right Side)*2	DCR
D-cut Axis Tip Type (Rear Side)*2	DCB
Mounting Holes on Front (Non-motor Side) Tapped Hole Specification (ø9 Counterbored Hole as Standard)	AHT

*2 Direction of D-cut is as shown in the figure below. (Figure shows the case of DCB)
Indicate the direction of the D-Cut when ordering.



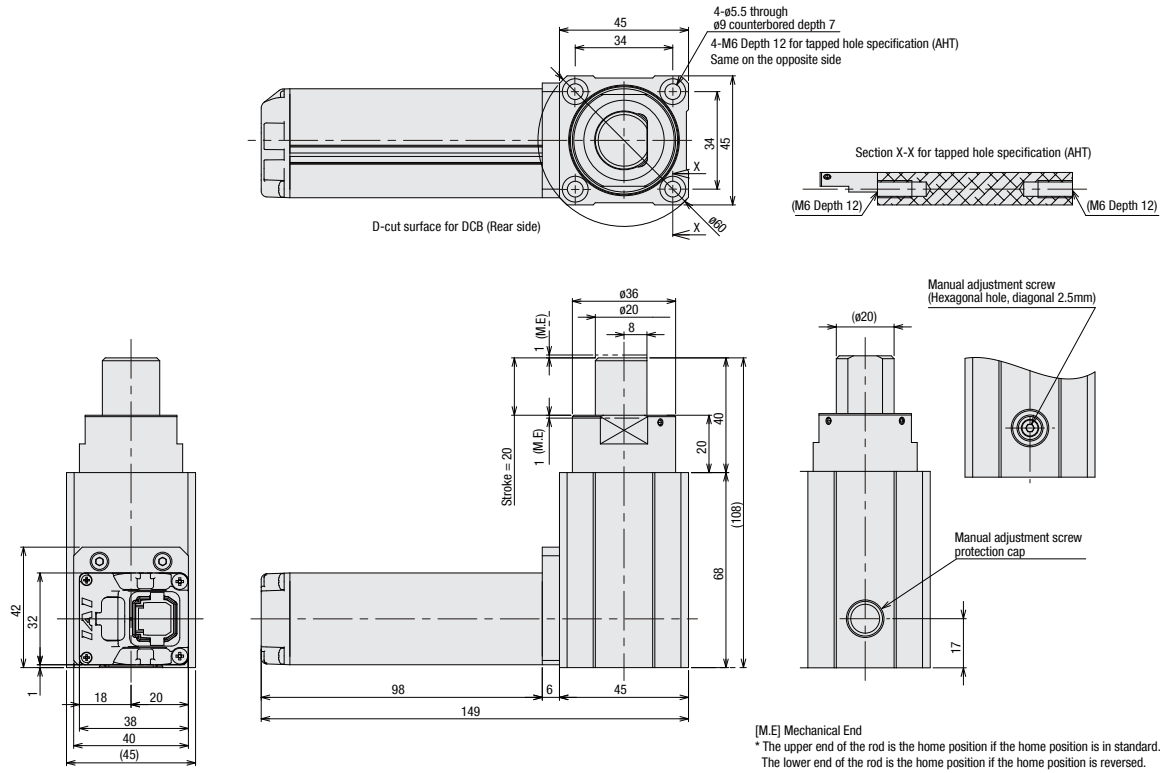
Correlation Graph of Work Piece Weight and Work Piece Impact Speed



Model Specification Items

Example)	RCP4	- ST4525E	- I	- 28P	- N	- 20	- P3	- □	- □
	Series	Type	Encoder Type	Motor Type	Lead	Stroke	Applicable Controllers	Cable Length	Options
		ST4525E: Width 45 mm 25 kg type	I: Incremental	28P: 28□ Pulse motor	N: None	20: 20mm	P3: PCON-CA MSEP	N: None P: 1m S: 3m M: 5m X □□: Specified length R □□: Robot cable	NM: Non-motor end specification DCT: D-cut axis tip type (Front) DCL: D-cut axis tip type (Left) DCR: D-cut axis tip type (Right) DCB: D-cut axis tip type (Rear) AHT: Mounting holes on front (Non-motor side) Tapped hole specification *ø9 Counterbored hole as standard

Dimensions



Model Codes of Cable for Maintenance
 Standard: CB-CAN-MPA □□□
 Robot cable: CB-CAN-MPA □□□-RB
 □□□ indicates the cable length. A desired length can be specified up to 20 m. e.g) 050=5 m

Controllers

* Please ask IAI to check latest controllers.

--	--	--	--	--	--	--	--

IAI America, Inc.
Headquarters: 2690 W. 237th Street, Torrance, CA 90505 (800) 736-1712
Chicago Office: 110 E. State Parkway, Schaumburg, IL 60173 (800) 944-0333
Atlanta Office: 1220 Kennestone Circle, Suite 108, Marietta, GA 30066 (678) 354-9470
www.intelligentactuator.com