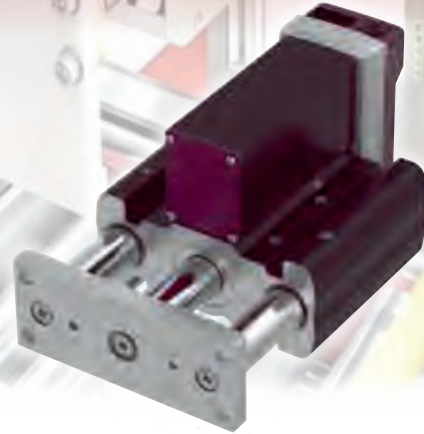


# Stopper Cylinder EC-ST15



## ■ Features

- Ideal as a workpiece-stopper on a conveyor line without air source.
- Workpieces up to 50kg.
- Maximum collision speed of workpiece: 40m/min. (in case of 9kg workpiece)

Stopper cylinder model	
IAI product series	Product model number
EC EleCylinder	EC-ST15

Cable length	
Cable code	Cable length
0	without cable (connector included)
1 ~ 3	1 ~ 3m
4 ~ 5	4 ~ 5m
6 ~ 10	6 ~ 10m

Options	
Name	Option code
Brake	B
Non-motor end specification (Note 1)	NM
PNP specification	PN
Twin power supply specification	TMD2
Battery-less absolute encoder specification	WA
Wireless communication specification	WL
Wireless axis-operation specification	WL2

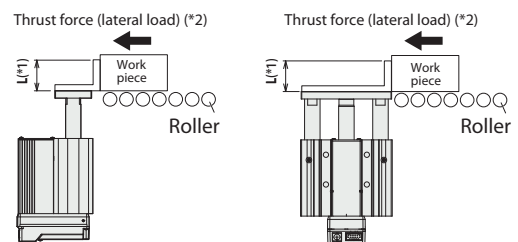
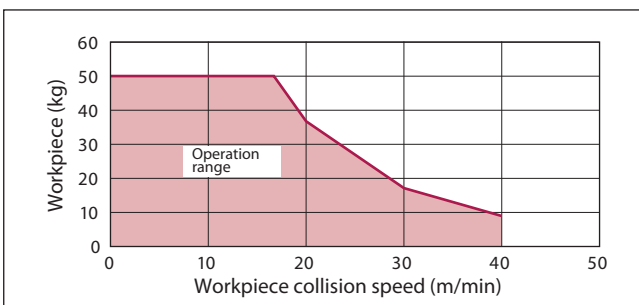
(Note 1) The home position of the standard specification is set on the non-motor side.  
Refer to the dimension drawing on back side for the home position.

Main specifications			
<b>Lead</b>		Ball screw lead (mm)	3
<b>Horizontal</b>	Payload (Note 2)	Payload (kg) (power-saving disabled)	5
		Speed/acceleration/deceleration	Maximum speed (mm/s)
	Speed/acceleration/deceleration	Minimum speed (mm/s)	4
		Rated acceleration/deceleration (G)	0.3
		Maximum acceleration/deceleration (G)	0.5
<b>Vertical</b>	Payload (Note 2)	Payload (kg) (power-saving disabled)	3
		Speed/acceleration/deceleration	Maximum speed (mm/s)
	Speed/acceleration/deceleration	Minimum speed (mm/s)	4
		Rated acceleration/deceleration (G)	0.3
		Maximum acceleration/deceleration (G)	0.5
<b>Brake</b>	Brake specification	Non-exciting electromagnetic brake	
	Brake-holding force (kgf)	12.5	
<b>Stroke (mm)</b>		50	

(Note 2) Based on speed of 200mm/s and acceleration/deceleration of 0.5G.

<b>Driving method</b>	Ball screw $\Phi$ 10mm, Rolled C10
<b>Positioning repeatability</b>	$\pm$ 0.15mm
<b>Rod</b>	$\Phi$ 25mm, Material: aluminum, hard alumite treatment
<b>Guide shaft</b>	S45C
<b>Front bracket</b>	S45C
<b>Ambience operating temperature &amp; humidity</b>	0~40°C, 85%RH or less (non-condensing)
<b>Degree of protection</b>	IP20
<b>Vibration and shock resistance</b>	4.9m/s <sup>2</sup>
<b>Overseas standard</b>	CE Marking, RoHS
<b>Motor type</b>	Pulse motor
<b>Encoder type</b>	Incremental / Battery-less absolute
<b>Number of encoder pulses</b>	800 pulse/rev

## Chart of the correlation between mass and collision speed of the workpiece



(\*1) Use within the dimension L=50mm or smaller.

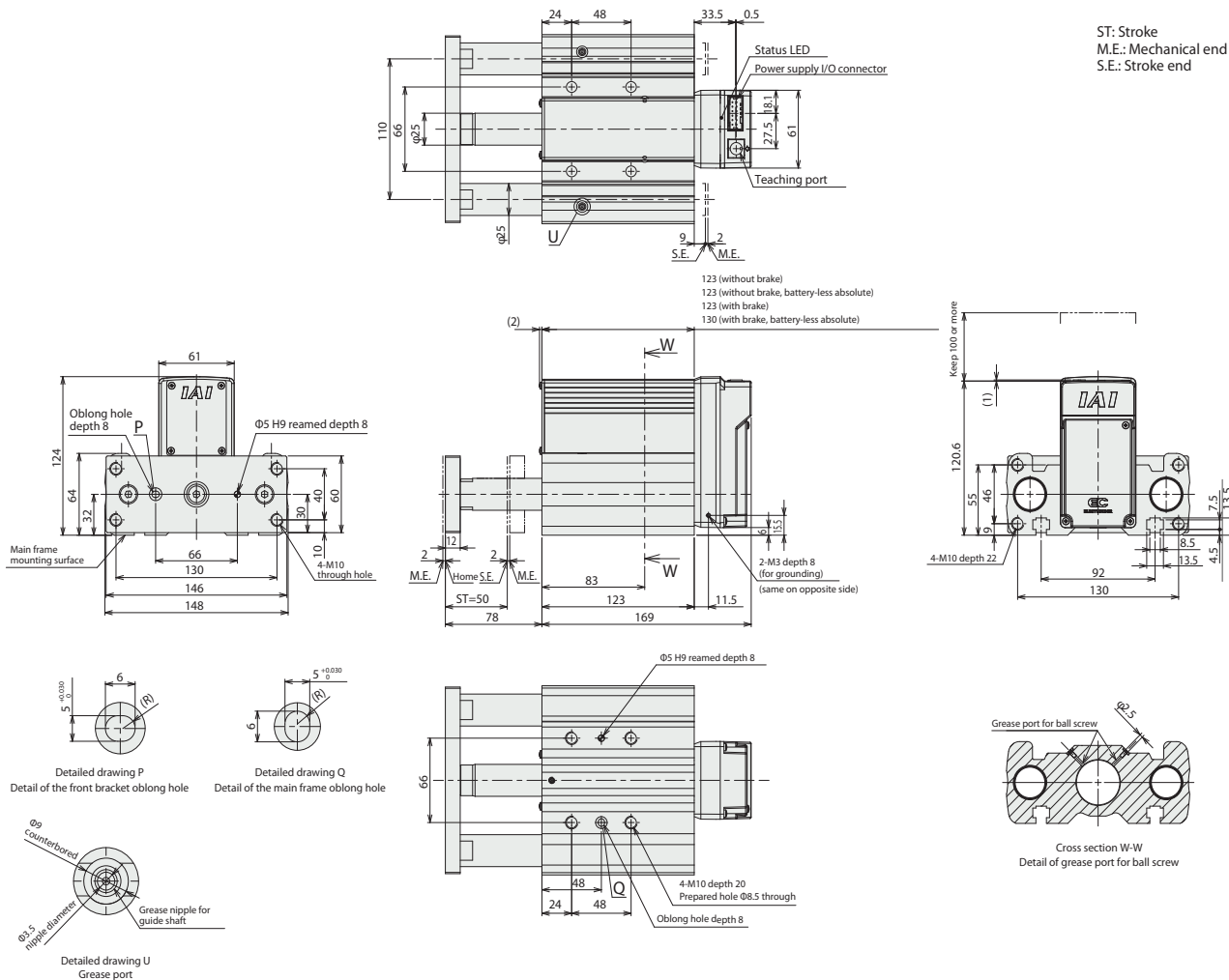
(\*2) Allowable load of the thrust force by conveyor should be 500N or smaller.

**Model specification items**

<b>EC</b>	–	<b>ST15</b>	–	<b>L</b>	–	<b>50</b>	–	<input type="checkbox"/>	–	<input type="checkbox"/>
Series		Type		Lead		Stroke		Cable length		Option
				L: 3mm		50: 50mm		O: Terminal type with connector		B: Brake
								1 : 1mm		NM: Non-motor end specification
								2 : 2mm		PN: PNP specification
								10: 10mm		TMD2: Twin power supply specification
										WA: Battery-less absolute encoder specification
										WL: Wireless communication specification
										WL2: Wireless manual operation specification

**Dimensions**

(Note) When performing a home return, the rod moves to M.E. Beware of possible interference with peripheral equipment.



**Mass**

	Stroke (mm)	50
Mass (kg)	Without brake	5.06
	With brake	5.36

**Controller**

\* The EC series is equipped with a built-in controller. Refer to the EleCylinder catalog for the details of the built-in controller.